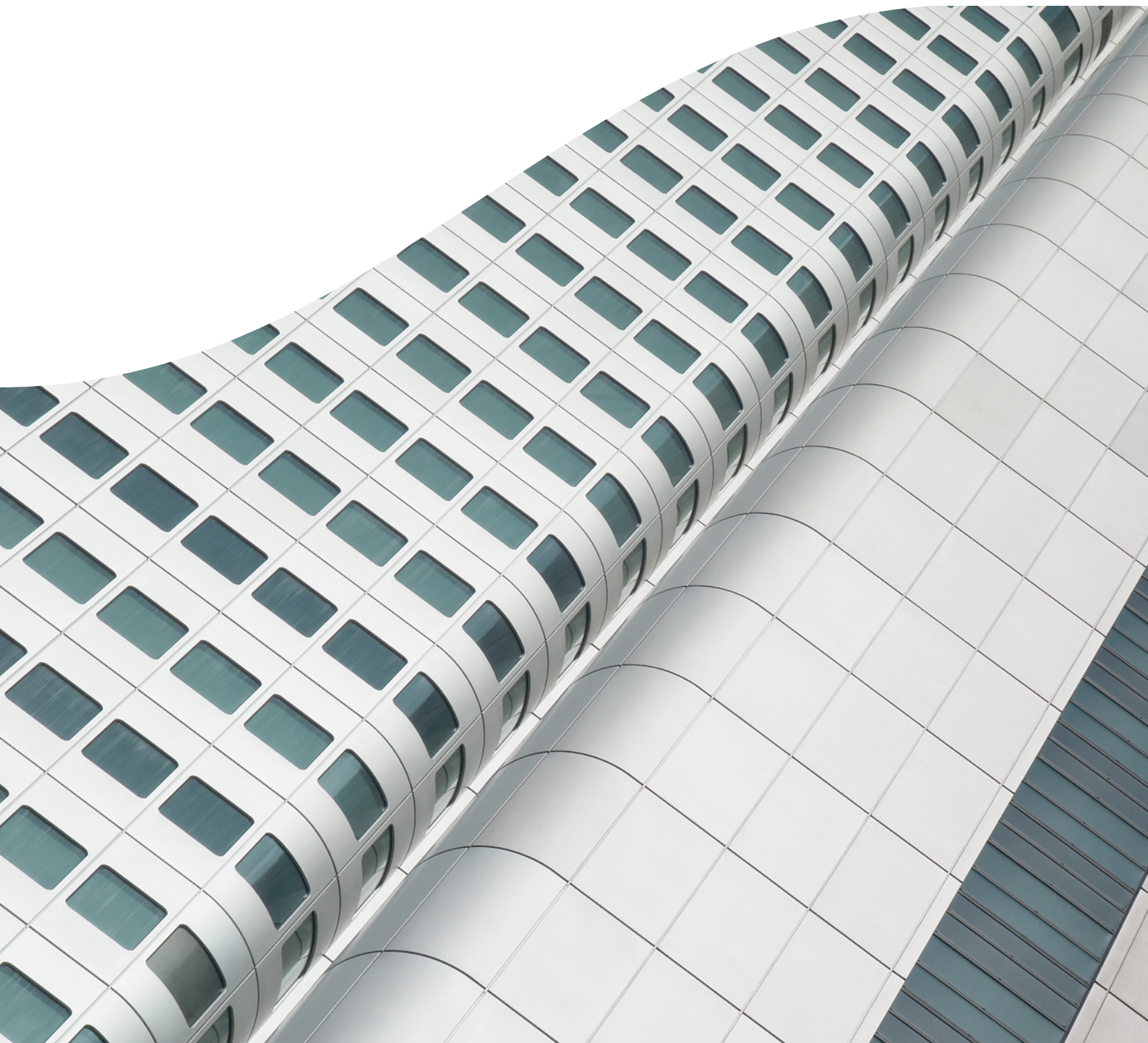




GLOBALLY CONNECTED

# Tax in Luxembourg



# Contents

Tax in Luxembourg .....	3
Our full services tax capabilities.....	4
Our global presence.....	7
Key contacts .....	8



# Tax in Luxembourg

With more than 380 tax advisors in offices throughout the world, we help multinational companies address the complex challenges of international commerce and business operations as well as manage and resolve tax disputes.

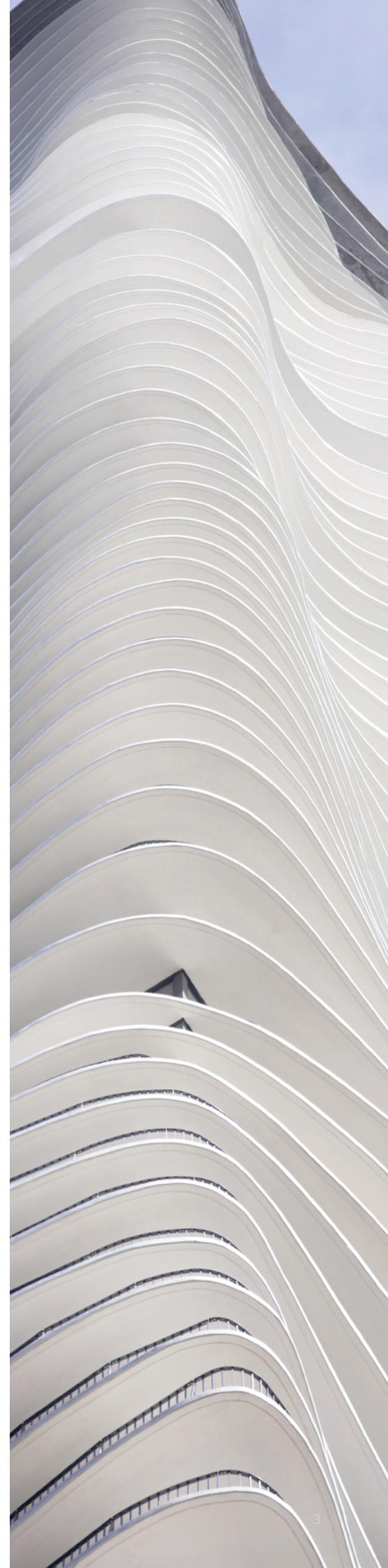
Companies operating in the global economy experience complex tax issues, both in their home country and in the jurisdictions in which they do business or invest in; this requires a coordinated global delivery of services incorporating both knowledge of national legislation and the appropriate international perspective, including tax treaties.

## **In Luxembourg**

---

Our tax team in Luxembourg has an approach that not only covers all aspects of Luxembourg tax, including direct tax, VAT, registration taxes, transfer pricing, tax compliance, tax litigation, mutual agreement procedures, but also provides deep knowledge of most foreign tax aspects relating to fund structuring and acquisitions/financing through Luxembourg vehicles.

We advise a large number of international clients on their Luxembourg tax requirements. We have particular expertise in the alternative fund industry, working on numerous private equity, real estate and fund formation matters.



# Our full services tax capabilities



## Tax planning

Tax planning is a critical element of almost every transaction and investment and offers an opportunity to add value and minimize financial risk. We advise clients including private equity and hedge funds, major multinational corporations, large pension funds, investment and commercial banks and family offices on their tax planning. Frequently our clients are not domiciled

in Luxembourg and we work closely with our colleagues in jurisdictions across the world to provide seamless cross-border advice.

We often collaborate with our clients' internal tax and accounting departments, as well as outside accounting firms, to design tailor-made structures enabling our clients to achieve their commercial and tax goals.



## Mandatory exchange of information

We provide our clients with a full range of services with respect to the exchange and reporting of information (DAC6, FATCA and CRS) including but not limited to FATCA/CRS classification of an entity concerned, filling self-certification forms or other forms or reporting.



## Transfer pricing

A well-designed, documented and implemented transfer pricing strategy can be a key competitive advantage for multinational companies, especially as regimes become ever-more demanding and complex and governments intensify enforcement.

Our advice in Luxembourg is part of a global transfer pricing team and we advise clients on the intricacies on transfer pricing in the context of international tax law. We advise on compliance with local legislation, planning of transfer pricing policies, valuation of transfer prices and support with dispute resolution and litigation.



## VAT

At 17%, Luxembourg has the lowest standard VAT rate in the European Union, one of the reasons it is such an attractive destination for businesses. We advise clients on matters including the incidence of VAT on transactions, structuring to minimise irrecoverable input VAT, the VAT impact of transfer pricing issues, the effect of VAT rules on commercial real estate transactions and all aspects of VAT disputes.



## Real estate tax

The structuring of property acquisitions, investment and development is heavily influenced by tax considerations. With large number of acquisitions being cross-border and structured via Luxembourg vehicles, we work with international colleagues on all stages of real estate transactions.



## Tax controversy

Our Luxembourg tax controversy practice focuses on matters such as tax audits, administrative appeals, mutual agreement procedures, exchange of information requests and tax litigation before administrative and civil courts. Close cooperation between our international offices and the regular involvement of colleagues in neighboring fields such as litigation, commercial law, employment law and corporate law allows us to provide comprehensive and solution-orientated advice in the representation of our clients.



## Mutual Agreement Procedure (MAP)

MAP can be used to resolve a wide range of disputes and to obtain a variety of benefits for taxpayers: eliminating double taxation, enforcing treaty limitation, determining the resident country of dual resident persons, securing non-discriminatory tax treatment.

Our team in Luxembourg can advise on the possibility to make an application for MAP in your country or on your cross-border tax controversy strategy more generally.

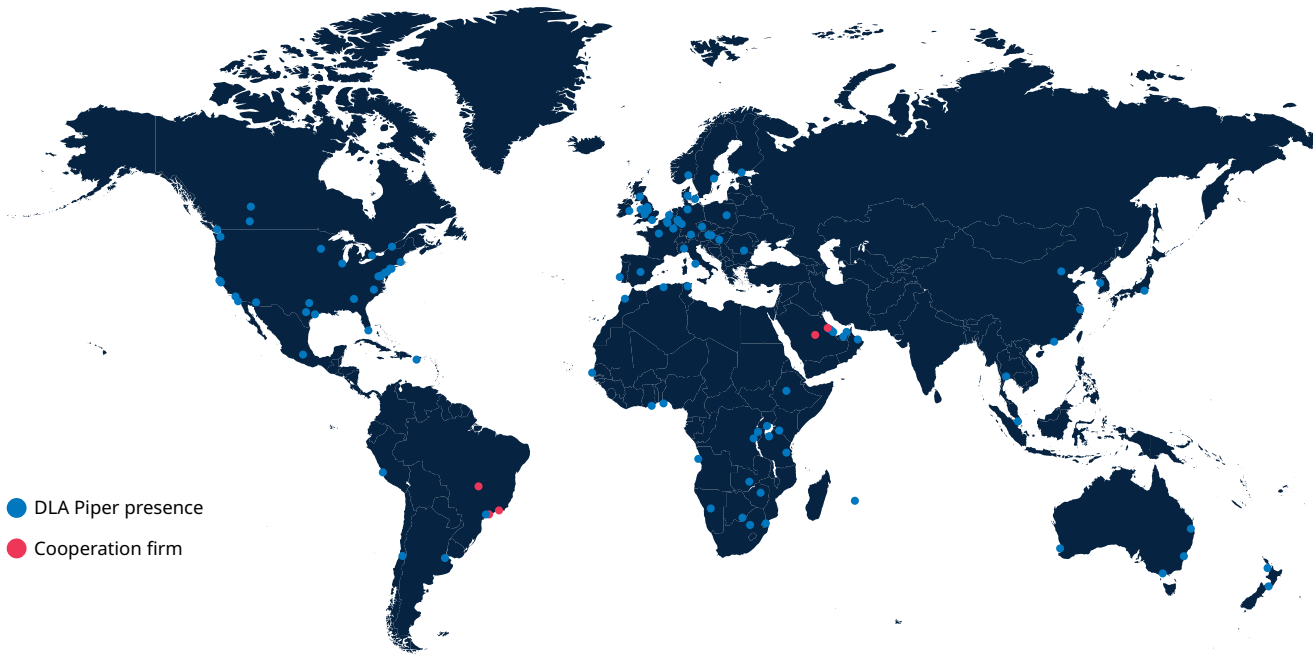


# Experience

- Assisted with the drafting of a strategy paper for a leading multi-strategy US based asset manager in relation to the design of the downstream tax structures for their next generation of PE/RE and debt funds with the aim to mitigate the impact of the OECD BEPS project and the EU anti-tax avoidance directive.
- Advised a leading German bank on the tax structuring of a Luxembourg based debt fund and its downstream investment structure and coordinated tax input from more than 30 European target jurisdictions as well as several investor jurisdictions.
- Advised a leading infrastructure asset manager on the design of the downstream investment structure for its European infrastructure flagship fund and in the filing of a tax ruling in relation thereto.
- Assisted a large UK based real estate asset manager with the tax structuring of a multi-billion EUR European real estate fund and its downstream investment structure, advised on the Luxembourg tax aspects and coordinated input of tax advisors in target jurisdictions for more than a dozen investments.
- Advised several asset managers on the set-up of their Luxembourg operations, including in relation to substance, cost-sharing and employee sharing considerations.
- Advised a US based asset manager specialised in financing energy-related infrastructure projects on the setting-up of their Luxembourg operations and on the tax aspects of investments made through Luxembourg.
- Represented a Russian fashion retail company headquartered in Luxembourg in a pre-litigation phase with the Luxembourg tax authorities and in a litigation phase before the Luxembourg administrative tribunal in relation to an exchange of information request from the Russian to the Luxembourg tax authorities.
- Assisted a UHNW family residing in another EU jurisdiction with their relocation to Luxembourg as well as with the structuring of their wealth via a Luxembourg private wealth management company (SPF), benefiting from the step-up in basis available in Luxembourg for private clients.
- Advised one of the largest financial institutions in Saudi Arabia on the establishment of a Shariah-compliant and tax efficient Luxembourg structure to acquire through share deal the shares in a Belgian SPV entity full owner of an office building under development in Brussels, Belgium.



# Our global presence



- DLA Piper presence
- Cooperation firm

## AMERICAS

- Atlanta
- Austin
- Baltimore
- Boston
- Brasilia\*
- Buenos Aires
- Calgary
- Chicago
- Dallas
- Edmonton
- Houston
- Lima
- Los Angeles
- Mexico City
- Miami
- Minneapolis
- Montreal
- New York
- Northern Virginia
- Philadelphia
- Phoenix
- Raleigh
- Rio de Janeiro\*
- San Diego
- San Francisco
- San Juan
- Santiago
- São Paulo\*
- Seattle
- Short Hills
- Silicon Valley
- Toronto
- Vancouver
- Washington, DC
- Wilmington

## EUROPE

- Aarhus
- Amsterdam
- Antwerp
- Birmingham
- Bratislava
- Brussels
- Bucharest
- Budapest
- Cologne
- Copenhagen
- Dublin
- Dusseldorf
- Edinburgh
- Frankfurt
- Hamburg
- Helsinki
- Leeds
- Lisbon
- Liverpool
- London
- Luxembourg
- Madrid
- Manchester
- Milan
- Munich
- Oslo
- Paris
- Prague
- Rome
- Sheffield
- Stockholm
- Vienna
- Warsaw

## MIDDLE EAST

- Abu Dhabi
- Al Khobar\*
- Doha
- Dubai
- Manama
- Muscat
- Riyadh\*

## AFRICA

- Algiers
- Addis Ababa
- Accra
- Bujumbura
- Casablanca
- Dakar
- Dar es Salaam
- Ebène
- Harare
- Johannesburg
- Gaborone
- Kampala
- Kigali
- Lagos
- Luanda
- Lusaka
- Maputo
- Mwanza
- Nairobi
- Tunis
- Windhoek
- Zanzibar

## ASIA PACIFIC

- Auckland
- Bangkok
- Beijing
- Brisbane
- Hong Kong
- Melbourne
- Perth
- Seoul
- Shanghai
- Singapore
- Sydney
- Tokyo
- Wellington

\* Cooperation firms

*“The team is very easy to work with. They quickly understand their client’s culture and where they want to get to in a deal.”*

— Legal 500, 2024

## Key contacts

---



**Luis Muñoz**  
Partner, Location Head  
+352 26 29 04 2633  
[luis.munoz@dlapiper.com](mailto:luis.munoz@dlapiper.com)



**Michal Stepien**  
Principal Head of Transfer Pricing  
+352 26 29 04 2072  
[michal.stepien@dlapiper.com](mailto:michal.stepien@dlapiper.com)



**Jacques Wantz**  
Partner and Tax Global Co-chair  
+352 26 29 04 2635  
[jacques.wantz@dlapiper.com](mailto:jacques.wantz@dlapiper.com)



**Emre Akan**  
Counsel  
+352 26 29 04 2612  
[emre.akan@dlapiper.com](mailto:emre.akan@dlapiper.com)

### DLA PIPER LUXEMBOURG

58, Blvd Grande-Duchesse Charlotte  
L-1330 Luxembourg  
Luxembourg

[dlapiper.com](https://www.dlapiper.com)